

**November 28th  
- December 1st  
2022**

Onsite at the **DoubleTree**  
by **Hilton Manchester Downtown**  
Manchester, NH

*Just 15 minutes from the  
Manchester-Boston Regional Airport*

# Christa McAuliffe

TRANSFORMING  
TEACHING  
TECHNOLOGY

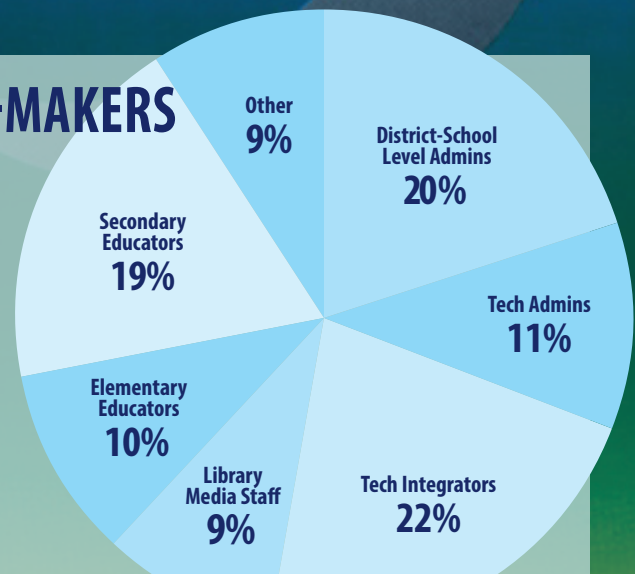
## Conference 2022

**JOIN US TO ENGAGE DECISION-MAKERS  
ACROSS NEW ENGLAND**

**FUTURE SCHOOLS READY**  **»»**  
PREPARING STUDENTS FOR SUCCESS

CO-SPONSORED BY THE  
**NHSAA** NH School Administrators Association  
**NHSTE** NH Affiliate of ISTE

IN PARTNERSHIP WITH  
**NHASP** NH Association of School Principals  
**NHCTO Council** NH CoSN Affiliate  
**NHSLMA** NH School Library Media Association



**Reserve your exhibit space  
& networking opportunity  
today at [www.nhcmtc.org](http://www.nhcmtc.org)**

**2022 Call for Solution Partners**

# Solution Partner Engagement Options

## 2-Day Solution Partner Booth

- \* 110ft<sup>2</sup> space (10' x 11') with pipe & drape, 6' long, skirted exhibit table, two chairs, & one 110v outlet
- \* Logo & contact information included on website/Sched online planner
- \* Includes two full-day Solution Partner credentials for each day (additional credentials @ \$60pp/day)

## 45-Minute VIRTUAL Presentation

- \* Includes 1 45-minute virtual presentation ~ Monday (11/28) or Thursday (12/1)
- \* Presentation information included on the website & online planner
- \* Available to ALL onsite solution partners & sponsors

## Provided for all ONSITE Solution Partner Options

Wireless internet access in the Solution Partner Pavilion (exclusive exhibitor password protected network)

Company name, contact information, hyperlinked website, & 100-character description listed on the CMTC website & Sched online planner

Minimum of two Solution Partner credentials for each day of engagement ~ includes name badge, meals, & access to all conference events & activities

## VIRTUAL Solution Partner (limited to 6)

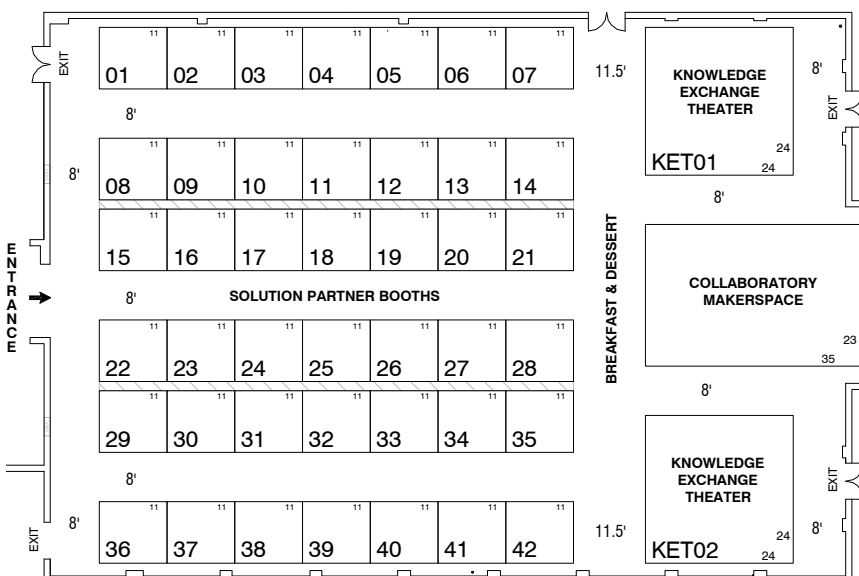
- \* Includes 1 45-minute virtual presentation ~ Monday (11/28) or Thursday (12/1)
- \* Includes 1 45-minute follow-up webinar post conference
- \* Presentation information included on the website & online planner
- \* CMTC partner organizations will forward virtual email event notices hosted by the solution partner to our respective membership lists through the end of June
- \* Logo & contact information included on website/Sched online planner

## Included with all Solution Partner Engagement Options

- \* Logo displayed on CMTC website & keynote slidedecks
- \* Website & Sched online planner
- \* Opportunity to post 10-minute YouTube marketing "trailer" videos
- \* 2 complimentary conference registrations
- \* Access to attendee information
- \* Participation in engagement activities (pre, during, & post-conference)

**10% Super Early-Bird discount available through July 31<sup>st</sup>**

**5% Early-Bird discount available through August 31<sup>st</sup>**



2-day ONSITE Standard Solution Partner Booth	\$1,250
VIRTUAL Solution Partner	\$600
45-minute VIRTUAL Presentation	\$300/ Presentation

For more information visit  
[www.nhcmtc.org](http://www.nhcmtc.org)

# Sponsorship Opportunities & Exhibit Benefits

Platinum Sponsor (2 available)	\$3,250
Gold Sponsor (3 available)	\$2,750
Silver Sponsor (4 available)	\$2,250
Bronze Sponsor (5 available)	\$1,750
Educator Scholarship (unlimited)	\$200

Please contact  
Jerry Frew at  
[jerry@nhsaa.org](mailto:jerry@nhsaa.org) to  
discuss sponsorship  
opportunities

NOTE: non-profit discount is not applicable to sponsorships

## Platinum \$3,250

- 2-day JUMBO booth (minimum 300ft<sup>2</sup>) in our Solution Partner Pavilion (includes 3 draped tables, up to 8 chairs & 3 110 outlet)
- 1-day presentation room (minimum 4 onsite concurrent sessions)
- Keynote Sponsor ~ highlighted during introduction
- 5 Tuesday reception guest invitations
- Benefits listed below for ALL sponsor levels

## Silver \$2,250

- 2-day standard booth (minimum 100ft<sup>2</sup>) in our Solution Partner Pavilion (includes 1 draped table, 2 chairs, & 1 110 outlet)
- 2 onsite 50-minute presentations (2nd floor)
- 1 onsite 25-minute Knowledge Exchange Theater (KET) presentation time
- PM Dessert Break Sponsor ~ highlighted on signage in the break area
- 3 Tuesday reception guest invitations
- Benefits listed below for ALL sponsor levels

## Educator Scholarship \$200

- Sponsor 1 teacher for 1 day onsite ~ select the school district/educator
- Scholarship recipient secures their lunch ticket at the sponsor's booth
- Website recognition

## Gold \$2,700

- 2-day double booth (minimum 200ft<sup>2</sup>) in our Solution Partner Pavilion (includes 2 draped tables, up to 6 chairs & 2 110 outlets)
- 2 onsite 50-minute presentations (2nd floor)
- 2 onsite 25-minute Knowledge Exchange Theater (KET) presentation times
- Breakfast Sponsor highlighted on signage in the break area
- 4 Tuesday reception guest invitations
- Benefits listed below for ALL sponsor levels

## Bronze \$1,750

- 2-day standard booth (minimum 100ft<sup>2</sup>) in our Solution Partner Pavilion (includes 1 draped table, 2 chairs, & 1 110 outlet)
- 1 onsite 50-minute presentation (2nd floor)
- 1 onsite 25-minute Knowledge Exchange Theater (KET) presentation time
- 2 Tuesday reception guest invitations
- Benefits listed below for ALL sponsor levels

## Available to all Sponsorship Tiers

Opportunity to sponsor Educator Scholarship at 50% discount  
10% Super Early-Bird discount available through July 31st &  
5% Early-Bird discount available through August 31st  
Priority booth selection through the end of September  
CMTC partner organizations will forward virtual email event notices hosted by the solution partner to our respective membership lists through the end of June

## Included with all Sponsorship Tiers:

- Logo included in 1 fall email blast to participants
- Logo displayed on CMTC website, all conference signage, & at the conference prior to keynote each day
- Full company contact information included in the CMTC solution partner directory
- Opportunity to post up to 10-minute YouTube marketing video
- Access to attendee contact information
- Participation in ALL engagement activities (pre, during, & post conference.)
- Sponsor Ribbon on Name Badge
- Certificate of Sponsor Appreciation for home office
- Presentations highlighted on the website & Sched online planner
- Company logo highlighted on the website sponsorship page

**CONFERENCE VENUE:** The DoubleTree by Hilton Manchester Downtown is located just off Interstate 293 at Exit 5 - Granite Street, approximately 15 minutes from the Manchester-Boston Regional Airport (MHT).

The Solution Partner Pavilion includes a password protected wireless network.  
DoubleTree by Hilton Manchester Downtown  
700 Elm Street, Manchester, NH 03101  
Phone: 603.625.1000 Fax: 603.206.4200

**General Questions? Contact Kymra Kurinkas about Solution Partner options available for CMTC22 at [kymra@nhsaa.org](mailto:kymra@nhsaa.org) or 603.225.3230**

# How do you support FUTURE READY districts?

Join us if your company provides **PRODUCTS** or **SERVICES** that support the Future Ready Framework



In support of the statewide & nationwide efforts to develop FUTURE READY schools & education professionals, CMTCC22 has aligned our presentation topics with the FUTURE READY FRAMEWORK GEARS.

## Curriculum, Instruction, & Assessment

- \* 21st Century Skills/Deeper Learning
- \* Personalized Learning
- \* Collaborative, Relevant, & Applied Learning
- \* Leveraging Technology
- \* Assessment—Analytics Inform Instruction

## Personalized Professional Learning

- \* Shared Ownership & Responsibility for Professional Growth
- \* 21st Century Skill Set
- \* Diverse Opportunities for Professional Learning Through Technology
- \* Broad-Based, Participative Evaluation

## Budget & Resources

- \* Efficiency & Cost Savings
- \* Alignment to District & School Plans
- \* Consistent Funding Streams
- \* Learning Return on Investment

## Collaborative Leadership

- \* Shared, Forward-Thinking Vision for Digital Learning
- \* Culture of Collaboration, Innovation, Capacity Building, & Empowerment
- \* High Expectations for Evidence-Based Transformations to Digital Learning
- \* Transformative, Coherent Thinking, Planning, Policies, & Implementation

## Community Partnerships

- \* Local Community Engagement & Outreach
- \* Global & Cultural Awareness
- \* Digital Learning Environments as Connectors to Local/Global Communities
- \* Parental Communication & Engagement
- \* District/School Brand

## Robust Infrastructure

- \* Adequacy of Devices; Quality & Availability
- \* Robust Network Infrastructure
- \* Adequate & Responsive Support
- \* Formal Cycle for Review & Replacement

## Use of Space & Time

- \* Flexible Learning; Anytime, Anywhere
- \* New Pedagogy, Schedules, & Learning Environment for Personalized Learning
- \* Competency-Based Learning
- \* Strategies for Providing Extended Time for Projects & Collaboration

## Data & Privacy

- \* Data & Data Systems
- \* Data Policies, Procedures, & Practices
- \* Data-Informed Decision Making
- \* Data Literate Education Professionals



## NEW opportunities to ensure an engaging & productive CMTCC experience!

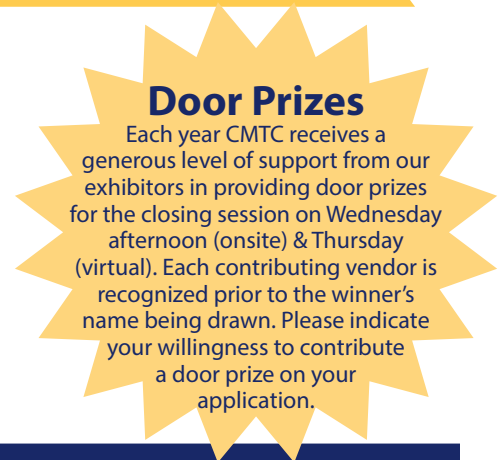
- ALL sponsorship options include a 2-day space & onsite presentation(s)
- All sponsorship options include Knowledge Exchange Theater presentation(s)
- All sponsorship options include Tuesday reception guest invitation(s)
- 45-minute virtual presentations available for purchase
- Solution Partners receive CONTACT INFORMATION for attendees who provide release permission
- Three 50-minute blocks of EXCLUSIVE Solution Partner engagement & networking



# ONSITE Conference & Exhibit Hours for the Partner Pavilion

Tuesday, 11/29/2022	Wednesday, 11/30/2022
Conference Hours: 7:30 am – 3:30pm	Conference Hours: 7:30 am – 3:30pm
<b>Exhibitor Setup Hours:</b> Monday PM ~ 12:00 – 6:00pm Tuesday AM ~ 6:30 – 7:30am	<b>Exhibitor Setup Hours:</b> Tuesday PM ~ 4:00 – 5:30pm Wednesday AM ~ 6:30 – 7:30am
Teardown Hours: 3:00 – 4:00pm	Teardown Hours: 3:00 – 4:00pm

Capital Convention is available to assist our solution partners with specific requests regarding booth configurations: please notify them prior to the conference. Capital Convention staff will be on-site during setup & teardown hours to answer any questions you may have.



## Meals

All 2-Day options include two vendor credentials that include meals and access to all conference events and activities. Additional exhibitor credentials can be purchased for \$60 per credential.

## Housing

Exhibitors are eligible for the reduced hotel rate of \$129 per night + tax (single/double) at the conference hotel:

DoubleTree by Hilton Manchester Downtown – 700 Elm Street, Manchester, NH 03101

Phone: 603.625.1000 or toll free 800.967.9033 ~ Fax: 603.206.4200

To receive the special conference rate at the hotel, individuals must indicate that they are with the Christa McAuliffe Technology Conference.

Check-in time is 3:00pm. Check-out is 11:00am. All reservations made after November 7th, 2022 may be subject to the hotel's prevailing rates.

Visit [www.nhcmctc.org](http://www.nhcmctc.org) for more information

## Hybrid ONSITE & VIRTUAL Engagement Options

CMTC22 is offering a variety of solution partner engagement options that includes both onsite opportunities and a limited number of virtual options. All onsite and virtual presentations will be included on the website and the online planner Sched. We hope that all our solution partners are able to select an engagement option that fits your needs, your budget, and your comfort level as we transition to this new normal.

## Early-Bird Discount Deadlines

For ALL solution partner opportunities ~ Registration/payment received in full by July 31st are eligible for a Super Early-Bird 10% discount. Registration/payment received in full by August 31st are eligible for a 5% Early-Bird discount.

## Non-Profit Discount

A non-profit discount may be available for qualifying solution partners, please contact Kymra at [kymra@nhsaa.org](mailto:kymra@nhsaa.org) to see if your organization meets our criteria. The non-profit discount does not apply to Sponsorship opportunities.

## Shipments

Advanced material shipments and direct material shipments should be sent C/O Capital Convention Contracts. Please refer to the exhibitor manual for instructions. Material handling fees will apply and shipping details/logistics are provided two months prior to the conference and upon receipt of exhibitor payment in full.

## Special Requests

If you have a "Free Standing Exhibit Booth," it must fit within the dimensions noted on the Registration Form. Please contact the DoubleTree staff directly at 603.625.1000 by Monday, November 7th, 2022 if you require any special adaptations (i.e. telephone, extra electrical) and to define your space layout. This is your responsibility and IS NOT INCLUDED in the registration fee.

## Booth Assignments

Platinum, Gold, Silver, and Bronze Sponsors paid in full will have first priority booth selection through the end of September. 2-Day Solution Partner Booth exhibitors paid in full will be assigned booths based on their selected preferences beginning in October in order of their registration payment date. CMTC reserves the right to adjust booth locations for logistical purposes

# Deadlines

**July 31<sup>st</sup>** Super Early-bird discount. Registrations and payments received in full by Wednesday, July 31st are eligible for a 10% discount.

**August 31<sup>st</sup>** Early-bird discount. Registrations and payments received in full by Wednesday, August 31st are eligible for a 5% discount.

**November 7<sup>th</sup>** Contact the DoubleTree for special arrangements. They may assess a late fee for ALL REQUESTS received after Monday, November 7th.

Questions? Email Kymra Kurinskas at [kymra@nhsaa.org](mailto:kymra@nhsaa.org) or call 603.225.3230