

**November 27th
- 30th, 2023**

Onsite at the **DoubleTree
by Hilton Manchester Downtown**
Manchester, NH

*Just 15 minutes from the
Manchester-Boston Regional Airport*

Christa McAuliffe

TRANSFORMING
TEACHING
TECHNOLOGY

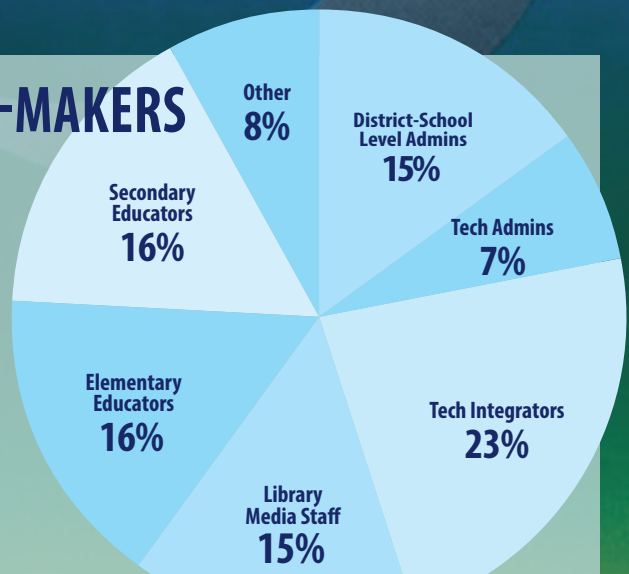
Conference 2023

**JOIN US TO ENGAGE DECISION-MAKERS
ACROSS NEW ENGLAND**

FUTURE SCHOOLS READY  **»»**
PREPARING STUDENTS FOR SUCCESS

CO-SPONSORED BY THE
NHSAA NH School Administrators Association
NHSTE NH Affiliate of ISTE

IN PARTNERSHIP WITH
NHASP NH Association of School Principals
NHCTO Council NH CoSN Affiliate
NHSLMA NH School Library Media Association



**Reserve your exhibit space
& networking opportunity
today at www.nhcmtc.org**

2023 Call for Solution Partners

Solution Partner Engagement Options

2-Day Solution Partner Booth

- * 110ft² space (10' x 11') with pipe & drape, 6' long, skirted exhibit table, two chairs, & one 110v outlet
- * Logo & contact information included on website/Sched online planner
- * Includes two full-day Solution Partner credentials for each day (additional credentials @ \$60pp/day)
- * (Up to) 1 onsite 25-minute Knowledge Exchange Theater (KET) presentation time (first come, first served as session spots are limited)

45-Minute VIRTUAL Presentation

- * Includes 1 45-minute virtual presentation ~ Monday (11/27) or Thursday (11/30)
- * Presentation information included on the website & online planner
- * Available to ALL onsite solution partners & sponsors

Provided for all ONSITE Solution Partner Options

Wireless internet access in the Solution Partner Pavilion (exclusive exhibitor password protected network)

Company name, contact information, hyperlinked website, & 100-character description listed on the CMTC website & Sched online planner

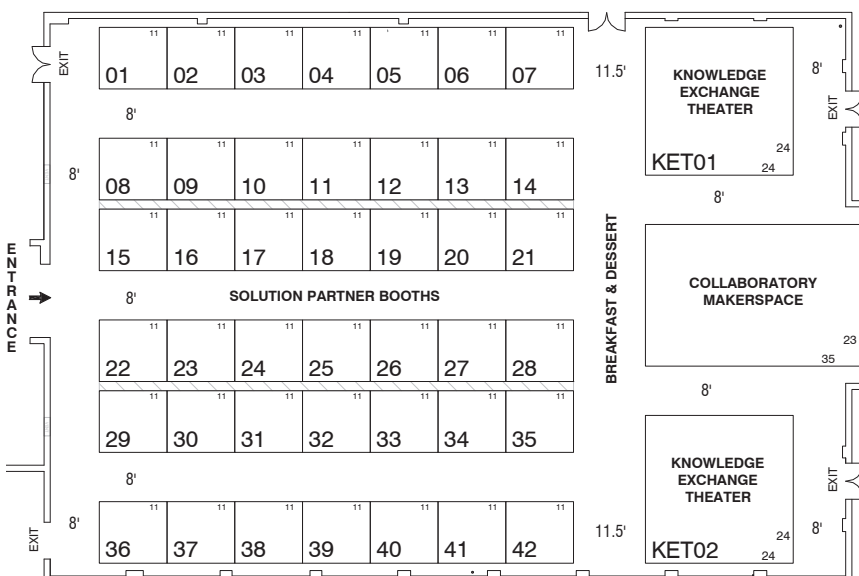
Minimum of two Solution Partner credentials for each day of engagement ~ includes name badge, meals, & access to all conference events & activities

Included with all Solution Partner Engagement Options

- * Logo displayed on CMTC website & keynote slidedecks
- * Website & Sched online planner
- * Opportunity to post 10-minute YouTube marketing "trailer" videos
- * 2 complimentary conference registrations
- * Access to attendee information
- * Participation in engagement activities (pre, during, & post-conference)

10% Super Early-Bird discount available through July 31st

5% Early-Bird discount available through August 31st



2-day ONSITE Standard Solution Partner Booth	\$1,400
45-minute VIRTUAL Presentation	\$300/ Presentation

For more information visit www.nhcmctc.org

Sponsorship Opportunities & Exhibit Benefits

Platinum Sponsor (2 available)	\$3,500
Gold Sponsor (3 available)	\$3,000
Silver Sponsor (4 available)	\$2,500
Bronze Sponsor (5 available)	\$2,000
Educator Scholarship (unlimited)	\$200

Please contact
Jerry Frew at
jerry@nhsaa.org to
discuss sponsorship
opportunities

NOTE: non-profit discount is not applicable to sponsorships

Platinum \$3,500

- * 2-day JUMBO booth (minimum 300ft²) in our Solution Partner Pavilion (includes 3 draped tables, up to 8 chairs & 3 110 outlet)
- * 1-day presentation room (minimum 4 onsite concurrent sessions)
- * Keynote Sponsor ~ highlighted during introduction
- * Benefits listed below for ALL sponsor levels

Gold \$3,000

- * 2-day double booth (minimum 200ft²) in our Solution Partner Pavilion (includes 2 draped tables, up to 6 chairs & 2 110 outlets)
- * 2 onsite 50-minute presentations (2nd floor)
- * 2 onsite 25-minute Knowledge Exchange Theater (KET)
- * Breakfast Sponsor highlighted on signage in the break area
- * Benefits listed below for ALL sponsor levels

Silver \$2,500

- * 2-day standard booth (minimum 100ft²) in our Solution Partner Pavilion (includes 1 draped table, 2 chairs, & 1 110 outlet)
- * 2 onsite 50-minute presentations (2nd floor)
- * PM Dessert Break Sponsor ~ highlighted on signage in the break area
- * Benefits listed below for ALL sponsor levels

Bronze \$2,000

- * 2-day standard booth (minimum 100ft²) in our Solution Partner Pavilion (includes 1 draped table, 2 chairs, & 1 110 outlet)
- * 1 onsite 50-minute presentation (2nd floor)
- * Benefits listed below for ALL sponsor levels

Educator Scholarship \$200

- * Sponsor 1 teacher for 1 day onsite ~ select the school district/educator
- * Scholarship recipient secures their lunch ticket at the sponsor's booth
- * Website recognition

Available to all Sponsorship Tiers

- Opportunity to sponsor Educator Scholarship at 50% discount
- 10% Super Early-Bird discount available through July 31st & 5% Early-Bird discount available through August 31st
- Priority booth selection through the end of September
- CMTC partner organizations will forward virtual email event notices hosted by the solution partner to our respective membership lists through the end of June

Included with all Sponsorship Tiers:

- * Logo included in 1 fall email blast to participants
- * Logo displayed on CMTC website, all conference signage, & at the conference prior to keynote each day
- * Full company contact information included in the CMTC solution partner directory
- * Opportunity to post up to 10-minute YouTube marketing video
- * Access to attendee contact information
- * Participation in ALL engagement activities (pre, during, & post conference.)
- * Sponsor Ribbon on Name Badge
- * Certificate of Sponsor Appreciation for home office
- * Presentations highlighted on the website & Sched online planner
- * Company logo highlighted on the website sponsorship page

CONFERENCE VENUE: The DoubleTree by Hilton Manchester Downtown is located just off Interstate 293 at Exit 5 - Granite Street, approximately 15 minutes from the Manchester-Boston Regional Airport (MHT).

The Solution Partner Pavilion includes a password protected wireless network.
DoubleTree by Hilton Manchester Downtown
700 Elm Street, Manchester, NH 03101
Phone: 603.625.1000 Fax: 603.206.4200

General Questions? **Contact** Kymra Kurinskas about
Solution Partner options available for CMTC23
at kymra@nhsaa.org or 603.225.3230

How do you support FUTURE READY districts?

Join us if your company provides **PRODUCTS** or **SERVICES** that support the Future Ready Framework



In support of the statewide & nationwide efforts to develop FUTURE READY schools & education professionals, CMTc23 has aligned our presentation topics with the FUTURE READY FRAMEWORK GEARS.

Curriculum, Instruction, & Assessment

- * 21st Century Skills/Deeper Learning
- * Personalized Learning
- * Collaborative, Relevant, & Applied Learning
- * Leveraging Technology
- * Assessment—Analytics Inform Instruction

Personalized Professional Learning

- * Shared Ownership & Responsibility for Professional Growth
- * 21st Century Skill Set
- * Diverse Opportunities for Professional Learning Through Technology
- * Broad-Based, Participative Evaluation

Budget & Resources

- * Efficiency & Cost Savings
- * Alignment to District & School Plans
- * Consistent Funding Streams
- * Learning Return on Investment

Collaborative Leadership

- * Shared, Forward-Thinking Vision for Digital Learning
- * Culture of Collaboration, Innovation, Capacity Building, & Empowerment
- * High Expectations for Evidence-Based Transformations to Digital Learning
- * Transformative, Coherent Thinking, Planning, Policies, & Implementation

Community Partnerships

- * Local Community Engagement & Outreach
- * Global & Cultural Awareness
- * Digital Learning Environments as Connectors to Local/Global Communities
- * Parental Communication & Engagement
- * District/School Brand

Robust Infrastructure

- * Adequacy of Devices; Quality & Availability
- * Robust Network Infrastructure
- * Adequate & Responsive Support
- * Formal Cycle for Review & Replacement

Use of Space & Time

- * Flexible Learning; Anytime, Anywhere
- * New Pedagogy, Schedules, & Learning Environment for Personalized Learning
- * Competency-Based Learning
- * Strategies for Providing Extended Time for Projects & Collaboration

Data & Privacy

- * Data & Data Systems
- * Data Policies, Procedures, & Practices
- * Data-Informed Decision Making
- * Data Literate Education Professionals



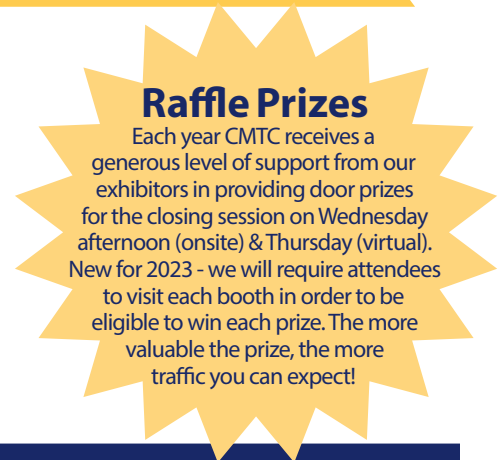
NEW opportunities to ensure an engaging & productive CMTc experience!

- ALL sponsorship options include a 2-day space & onsite presentation(s)
- All 2-Day Booth options include Knowledge Exchange Theater presentation(s)
- 45-minute virtual presentations available for purchase
- Solution Partners receive CONTACT INFORMATION for attendees who provide release permission
- Three 50-minute blocks of EXCLUSIVE Solution Partner engagement & networking

ONSITE Conference & Exhibit Hours for the Partner Pavilion

Tuesday, 11/28/2023	Wednesday, 11/29/2023
Conference Hours: 7:30 am – 3:30pm	Conference Hours: 7:30 am – 3:30pm
Exhibitor Setup Hours: Monday PM ~ 12:00 – 6:00pm Tuesday AM ~ 6:30 – 7:30am	Exhibitor Setup Hours: Tuesday PM ~ 4:00 – 5:30pm Wednesday AM ~ 6:30 – 7:30am
Teardown Hours: 3:00 – 4:00pm	Teardown Hours: 3:00 – 4:00pm

Capital Convention is available to assist our solution partners with specific requests regarding booth configurations: please notify them prior to the conference. Capital Convention staff will be on-site during setup & teardown hours to answer any questions you may have.



Meals

All 2-Day options include two vendor credentials that include meals and access to all conference events and activities. Additional exhibitor credentials can be purchased for \$60 per credential.

Housing

Exhibitors are eligible for the reduced hotel rate of **\$129** per night + tax (single/double) at the conference hotel:

DoubleTree by Hilton Manchester Downtown – 700 Elm Street, Manchester, NH 03101

Phone: 603.625.1000 or toll free 800.967.9033 ~ Fax: 603.206.4200

To receive the special conference rate at the hotel, individuals must indicate that they are with the Christa McAuliffe Technology Conference.

Check-in time is 3:00pm. Check-out is 11:00am. All reservations made after November 6th, 2023 may be subject to the hotel's prevailing rates.

Visit www.nhcmctc.org for more information

Hybrid ONSITE & VIRTUAL Engagement Options

CMTC23 is offering a variety of solution partner engagement options that includes both onsite opportunities and a limited number of virtual options. All onsite and virtual presentations will be included on the website and the online planner Sched. We hope that all our solution partners are able to select an engagement option that fits your needs, your budget, and your comfort level as we transition to this new normal.

Early-Bird Discount Deadlines

For ALL solution partner opportunities ~ Registration/payment received in full by July 31st are eligible for a Super Early-Bird 10% discount. Registration/payment received in full by August 31st are eligible for a 5% Early-Bird discount.

Non-Profit Discount

A non-profit discount may be available for qualifying solution partners, please contact Kymra at kymra@nhsaa.org to see if your organization meets our criteria. **The non-profit discount does not apply to Sponsorship opportunities.**

Shipments

Advanced material shipments and direct material shipments should be sent C/O Capital Convention Contracts. Please refer to the exhibitor manual for instructions. Material handling fees will apply and shipping details/logistics are provided two months prior to the conference and upon receipt of exhibitor payment in full.

Special Requests

If you have a "Free Standing Exhibit Booth," it must fit within the dimensions noted on the Registration Form. Please contact the DoubleTree staff directly at 603.625.1000 by Monday, November 6th, 2023 if you require any special adaptations (i.e. telephone, extra electrical) and to define your space layout. This is your responsibility and **IS NOT INCLUDED** in the registration fee.

Booth Assignments

Platinum, Gold, Silver, and Bronze Sponsors paid in full will have first priority booth selection through the end of September. 2-Day Solution Partner Booth exhibitors paid in full will be assigned booths based on their selected preferences beginning in October in order of their registration payment date. CMTC reserves the right to adjust booth locations for logistical purposes

Deadlines

July 31st Super Early-bird discount. Registrations and payments received in full by Wednesday, July 31st are eligible for a 10% discount.

August 31st Early-bird discount. Registrations and payments received in full by Wednesday, August 31st are eligible for a 5% discount.

November 6th Contact the DoubleTree for special arrangements. They may assess a late fee for ALL REQUESTS received after Monday, November 6th.

Questions? Email Kymra Kurinkas at kymra@nhsaa.org or call 603.225.3230